

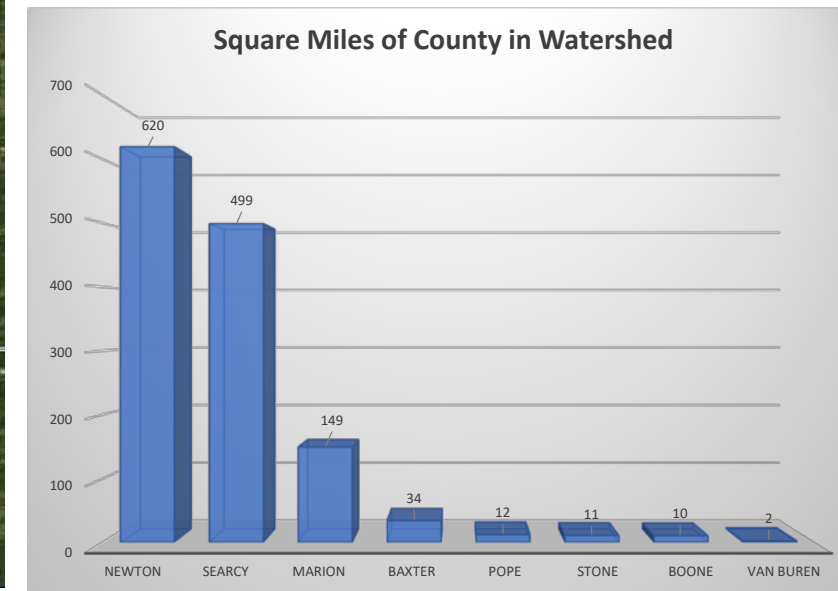
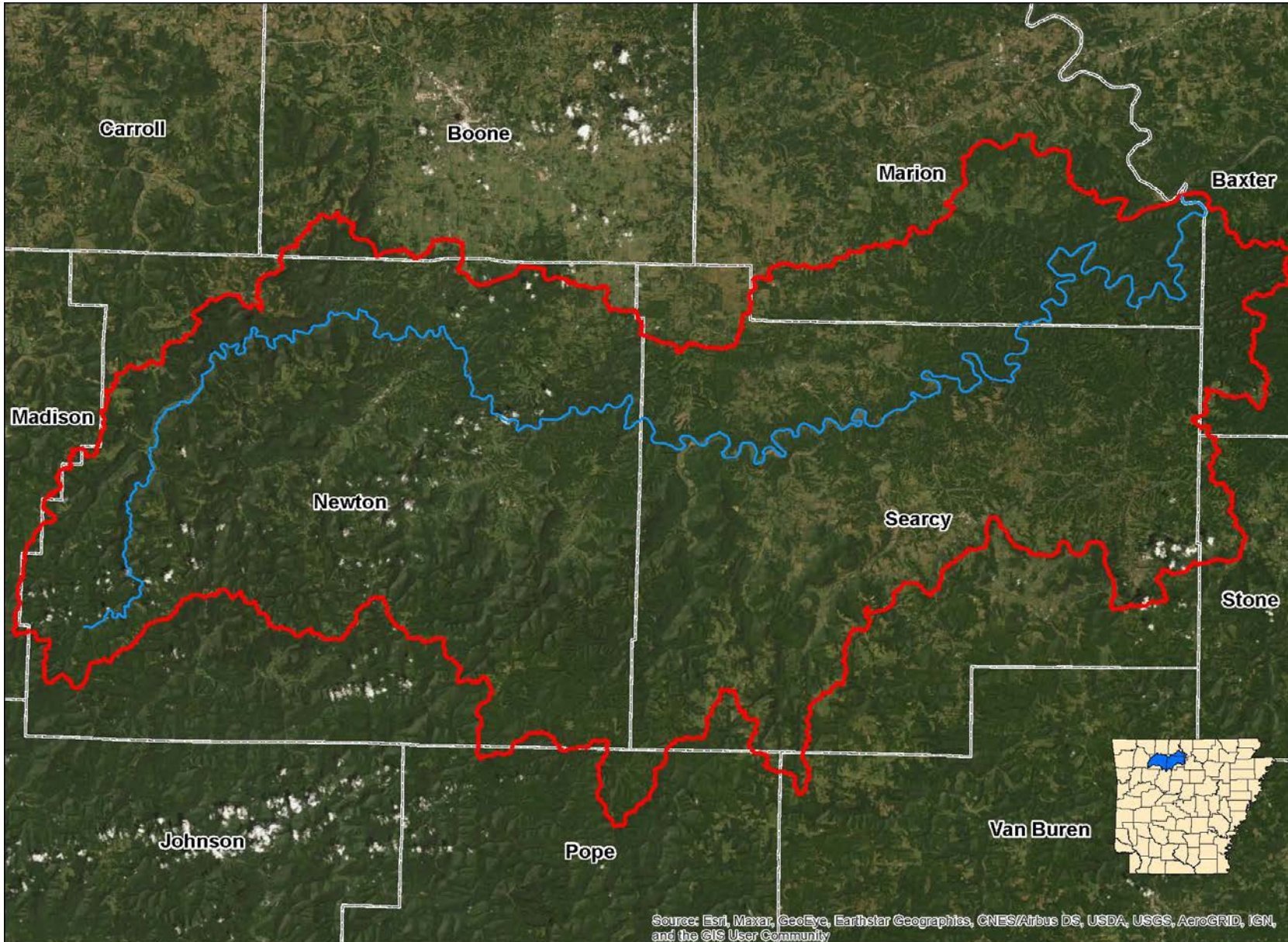


**NATURAL RESOURCES  
DIVISION**

# **Unpaved Roads in the Buffalo River Watershed Report**

# Geography of the Buffalo River Watershed

The Buffalo River watershed begins along the western border of Newton County. The river flows easterly to meet the White River. The watershed drains roughly 1,330 square miles of the Boston Mountains and Ozark Highlands. It covers parts of eight counties. The terrain is rugged and steep. The majority of the watershed lies in Newton and Searcy counties, with the smallest portion lying in Van Buren County.



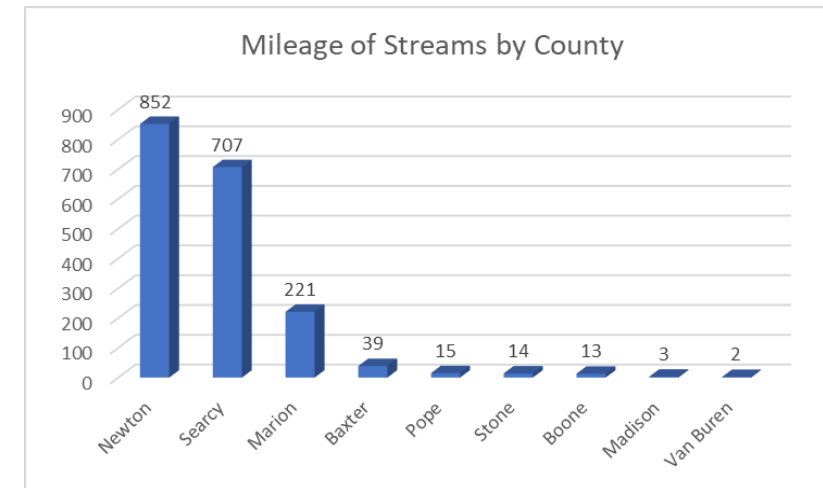


# Tributary Streams that Make Up the Buffalo River Watershed

The Buffalo River has around 1,866 miles of tributary streams which flow into it from around the watershed. Of that 1,866 miles Newton county contains 852, Searcy county 707, and Marion county 221 miles. Baxter has 39, Pope 15, Stone 14, and Boone 13. Avery small portion of Van Buren and Madison counties have 2 and 3 miles.



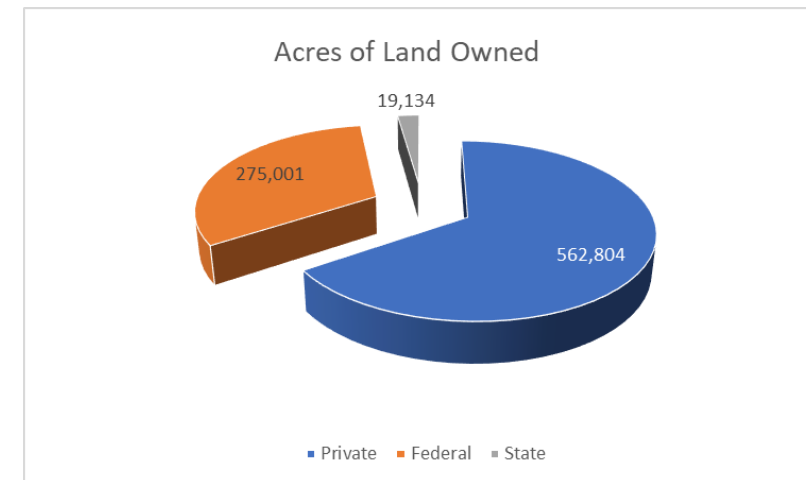
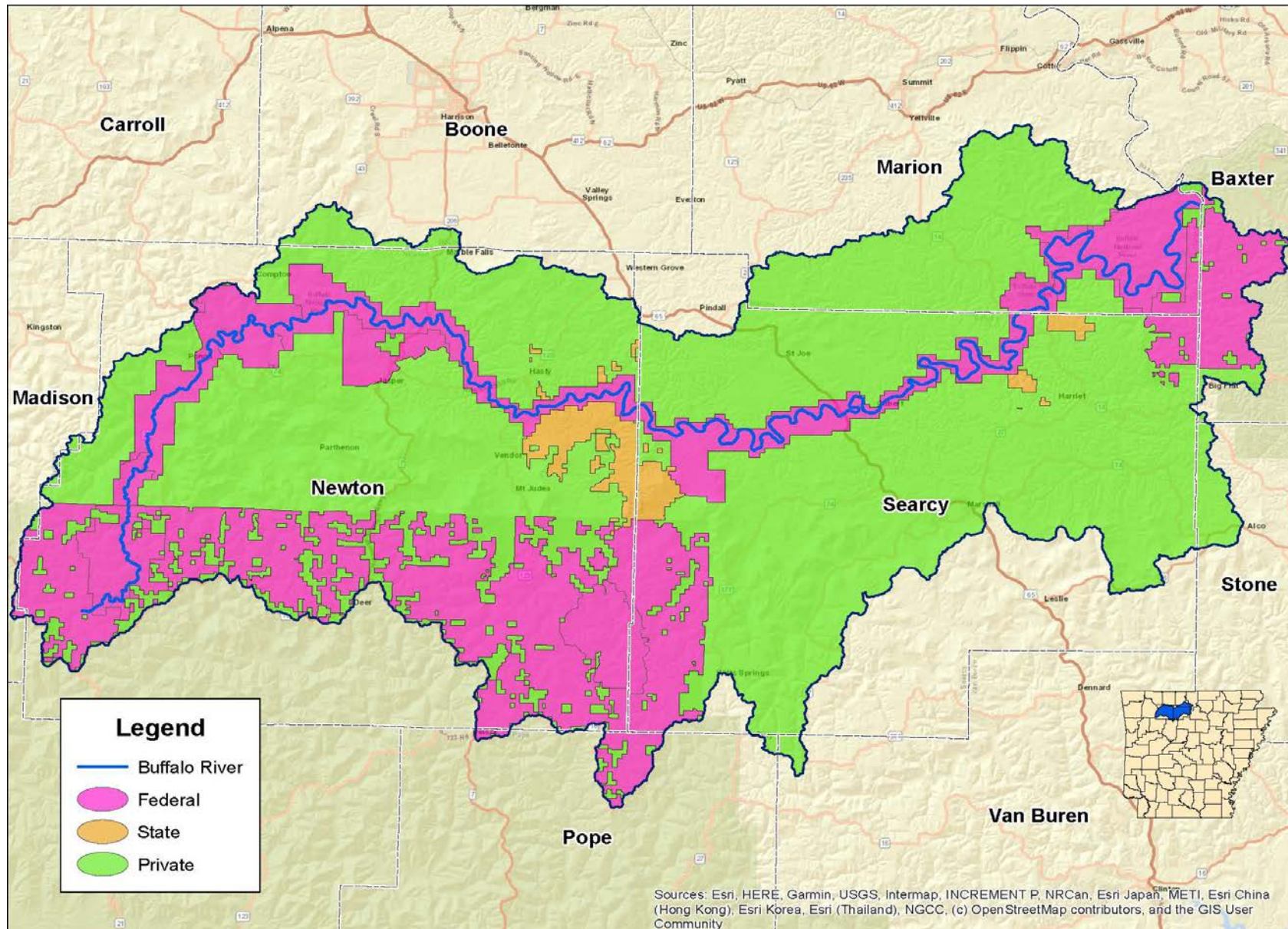
Sources: Esri, HERE, Garmin, USGS, Intermap, INCREMENT P, NRCan, Esri Japan, METI, Esri China (Hong Kong), Esri Korea, Esri (Thailand), NGCC, (c) OpenStreetMap contributors, and the GIS User Community





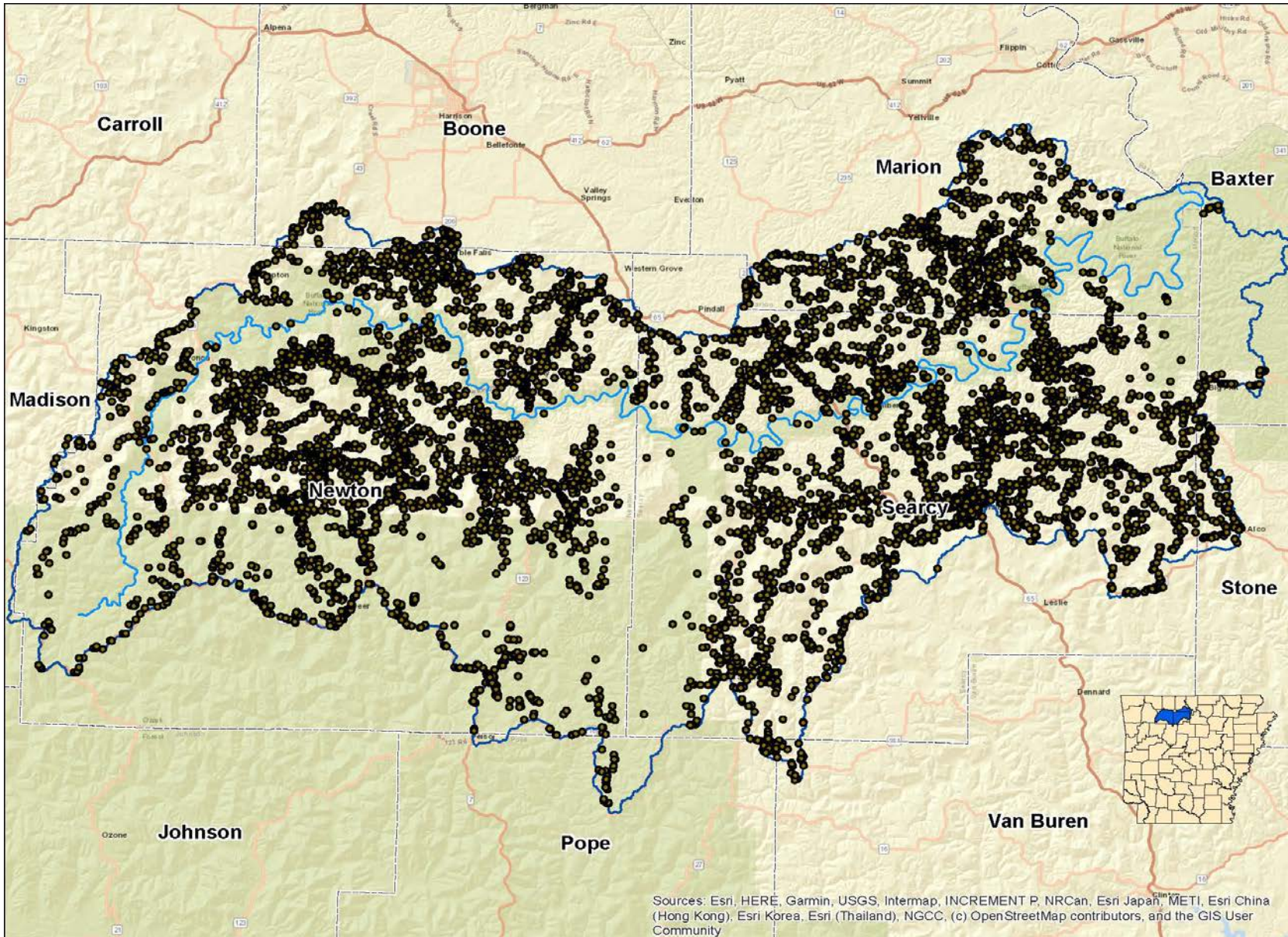
# Ownership of Land in the Watershed

Ownership of land in the watershed is broken up into three categories, private, state, and federal. The majority of the land approximately 562,804 acres are owned by private citizens, while the federal government owns roughly 275,001 acres. The state follows with close to 19,134 acres of land.



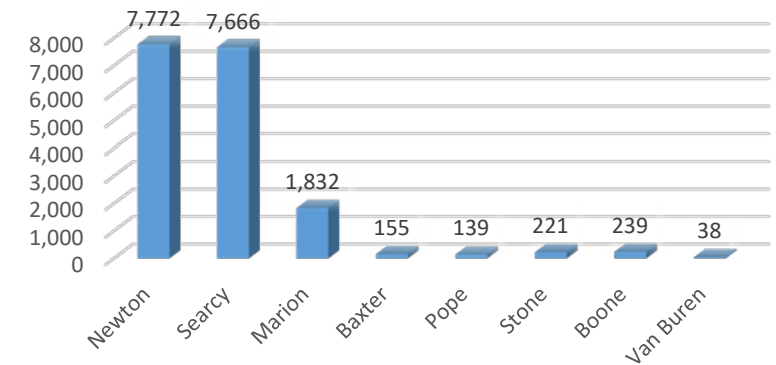


# Distribution of Population in the Watershed



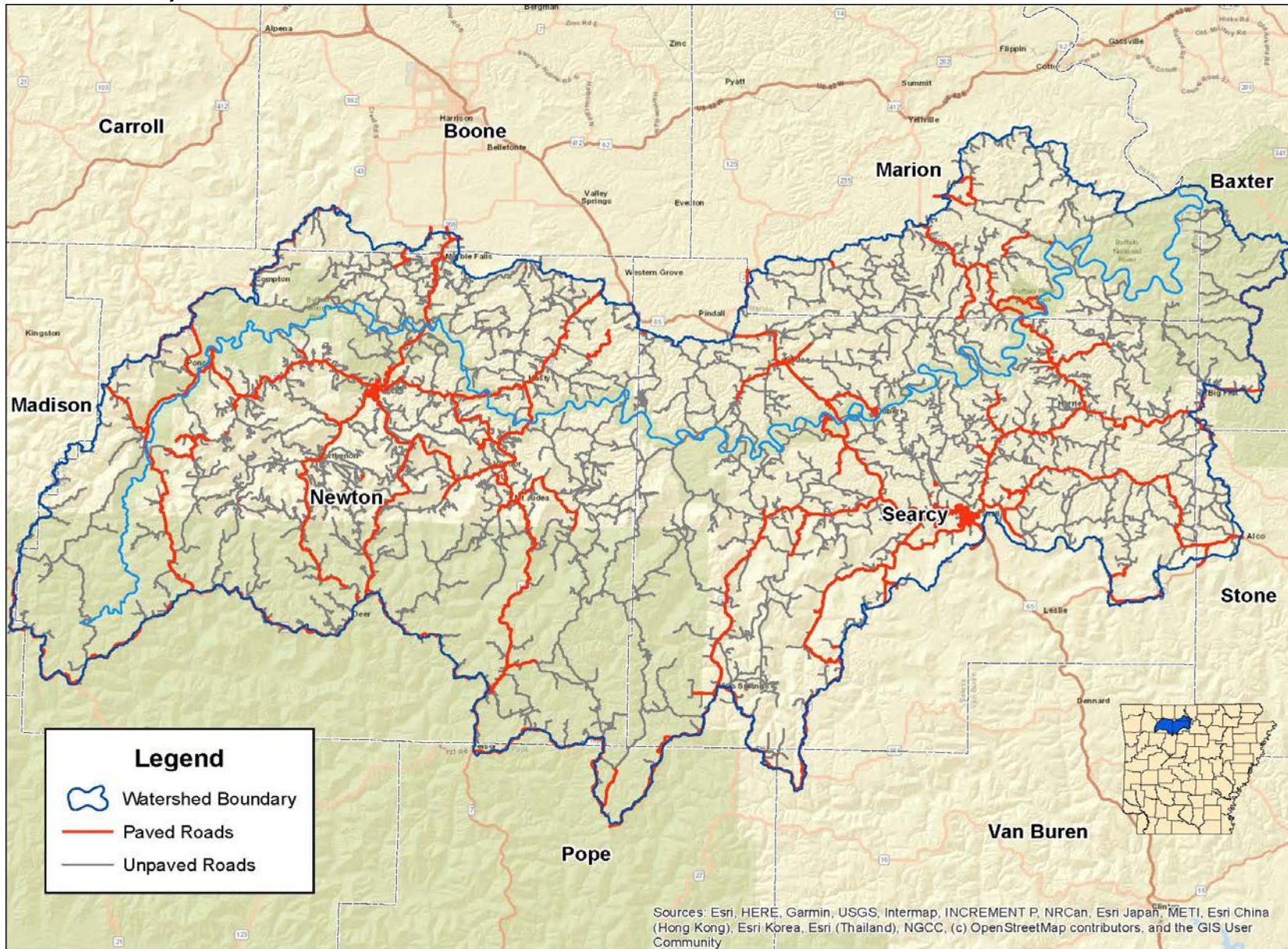
The watershed's estimated population is around 18,000. The majority of population is situated in Newton and Searcy counties.  
\* Estimate derived by factoring the number of 9-1-1 addresses by 1.8

Estimated Population by County in Watershed

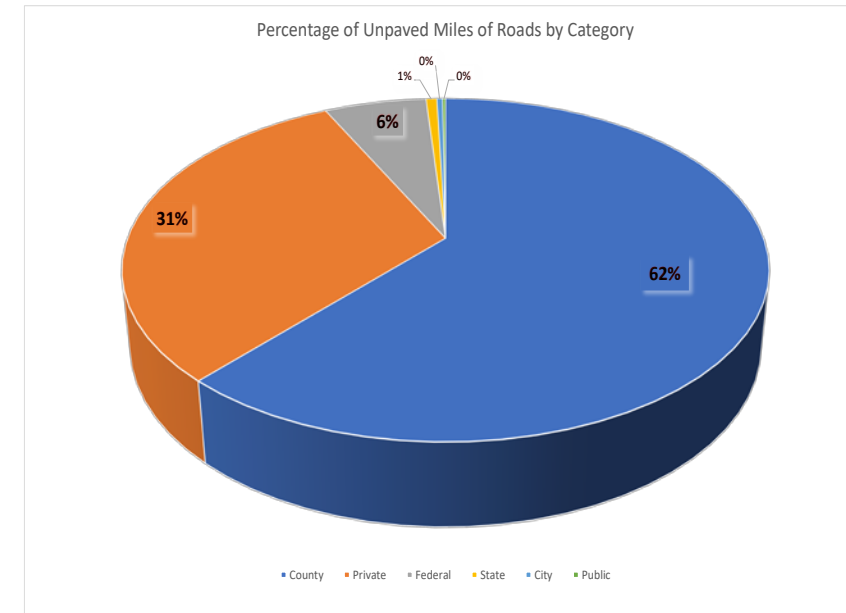




# 2,518 Miles of Roads in the Buffalo River Watershed



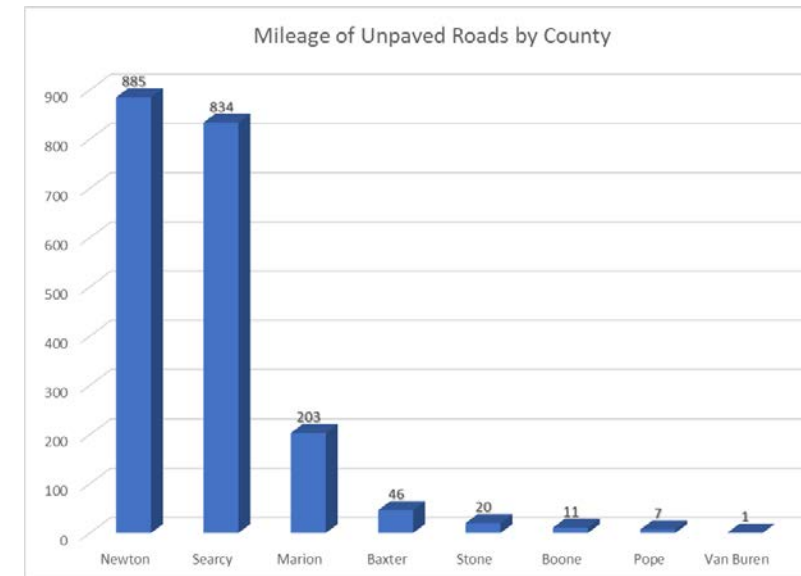
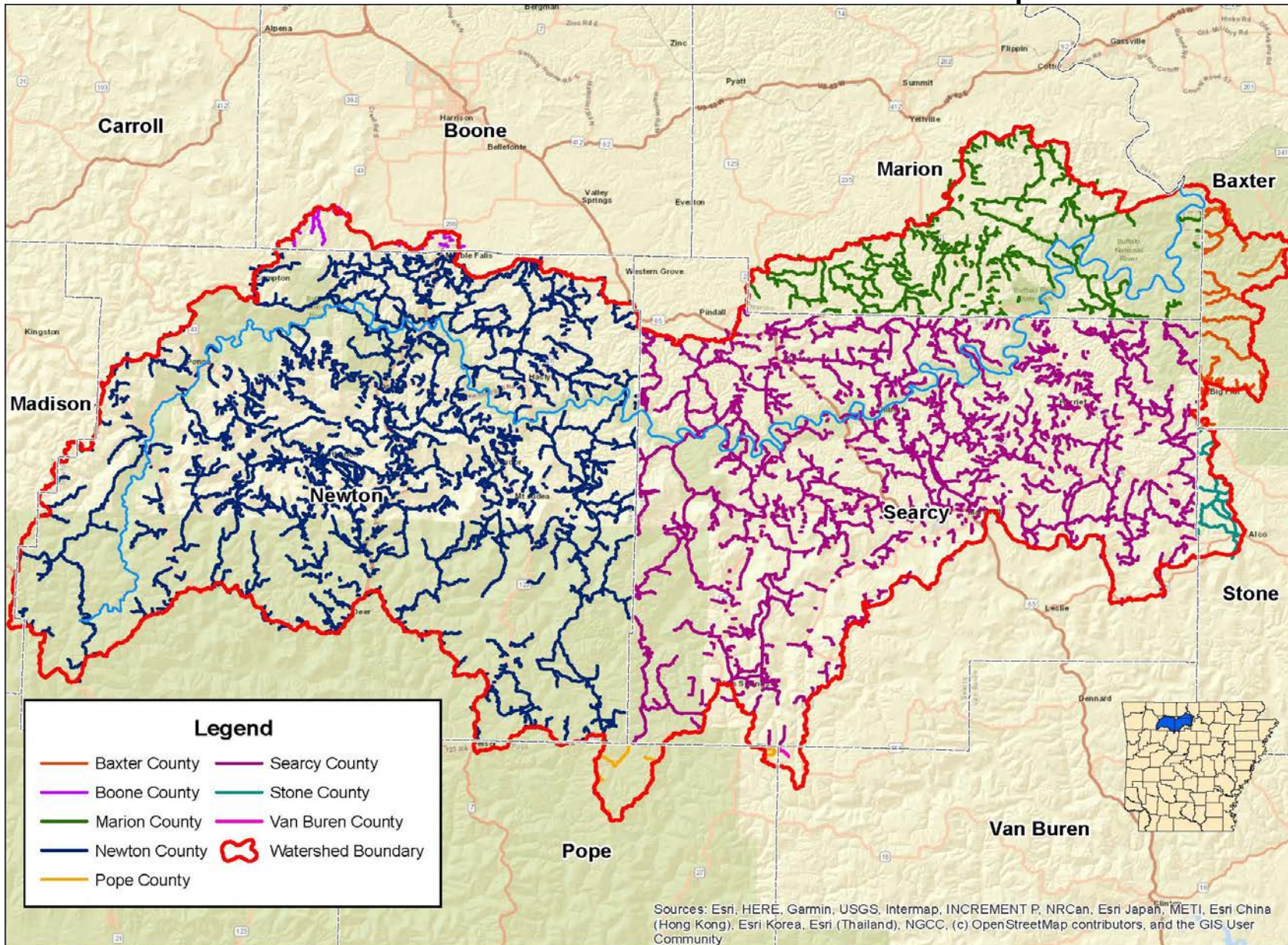
Of the 2,518 miles of road in the watershed, the majority are unpaved. The pie chart below illustrates that 1,245 miles or 62% of unpaved roads are under county jurisdiction. Of that 1,245 nearly 630 miles or 31% are privately owned. These may be driveways to farms or residences.





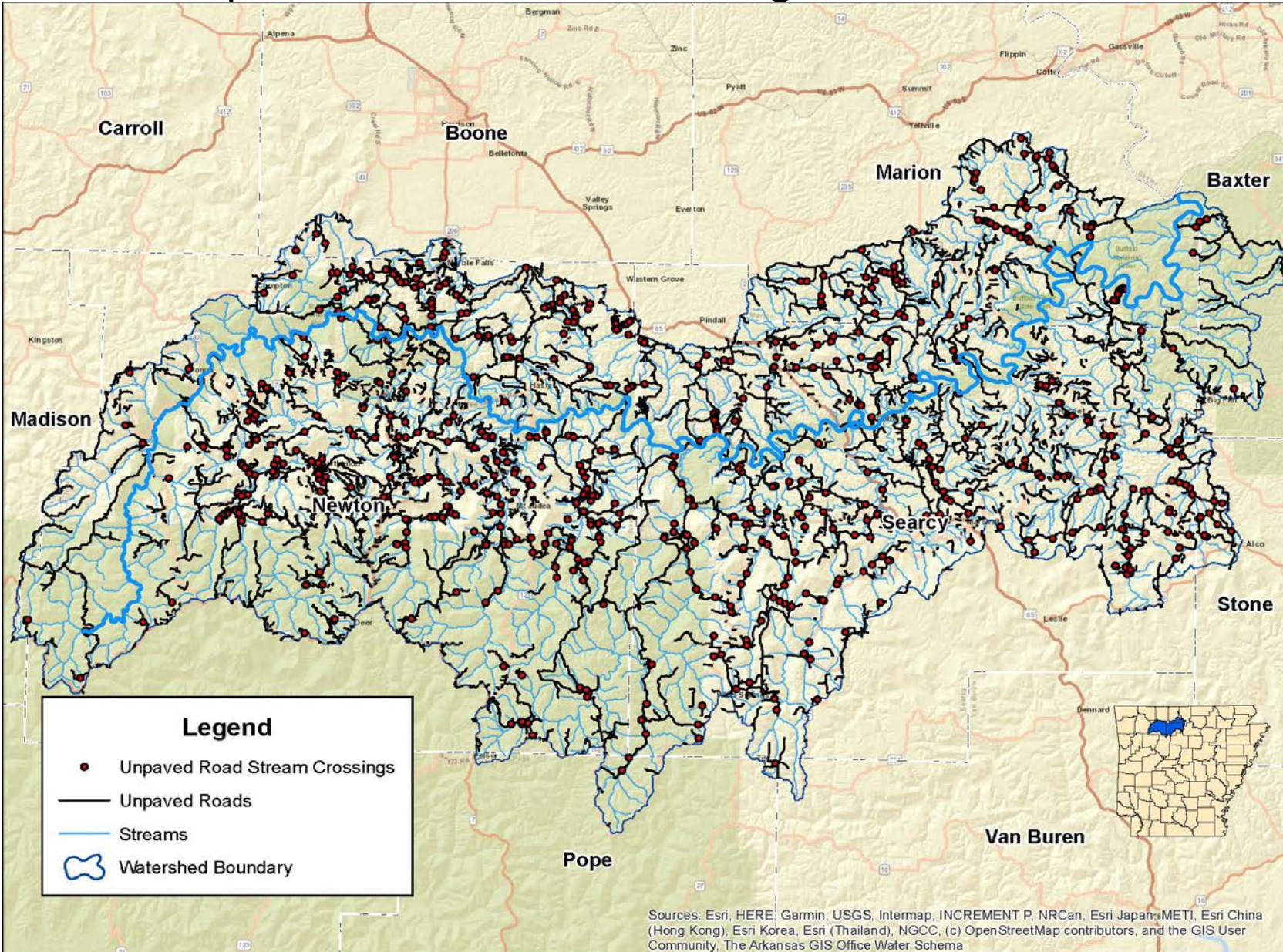
# 80% of Roads in the Watershed Are Unpaved

**2,007 of the 2,518 miles of roads are unpaved. The majority these can be found in Newton (885 miles) and Searcy County (834 miles). Marion, Baxter, and Stone contain 203, 46, and 20 miles respectively; with only 11 in Boone, 7 in Pope and 1 in Van Buren.**

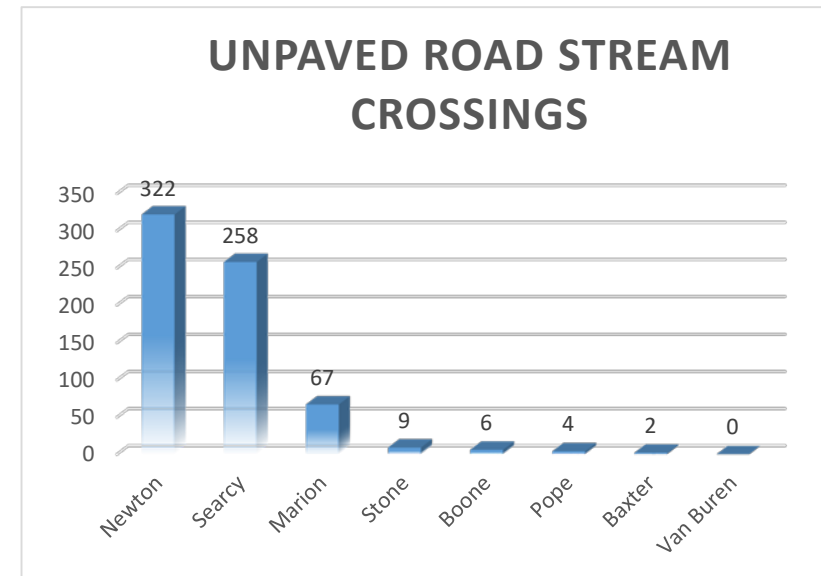




# Unpaved Road Stream Crossings in the Watershed

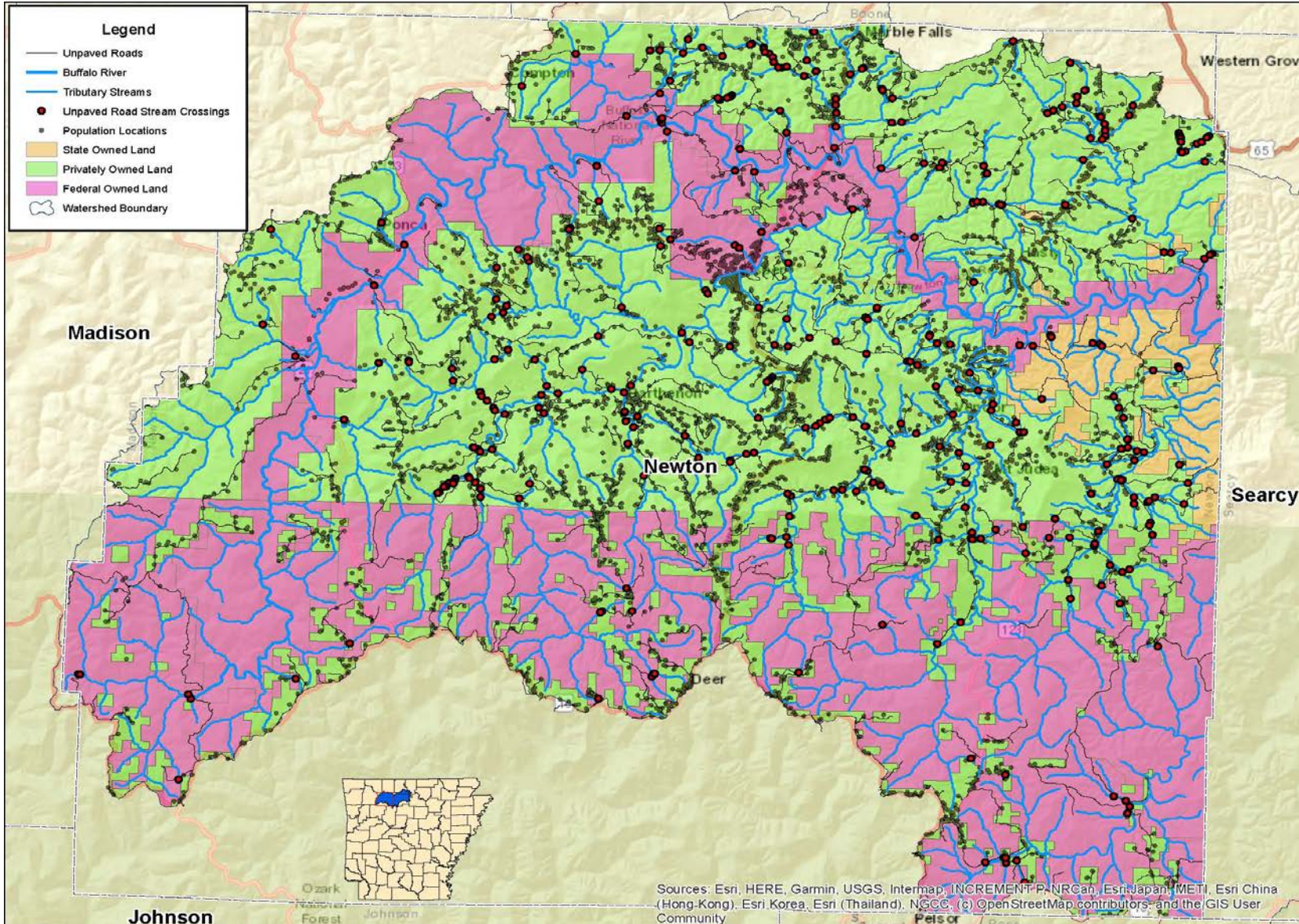


The Buffalo River Watershed contains 668 points where an unpaved road crosses a stream. Of those 668 Newton County has 322, Searcy 258, and Marion 67 stream crossings. Stone County follows with 9, Boone 6, Pope 4 and Baxter 2





# County Breakdown of the Watershed - Newton County



The Table Below is a Breakdown of the Items on the Map

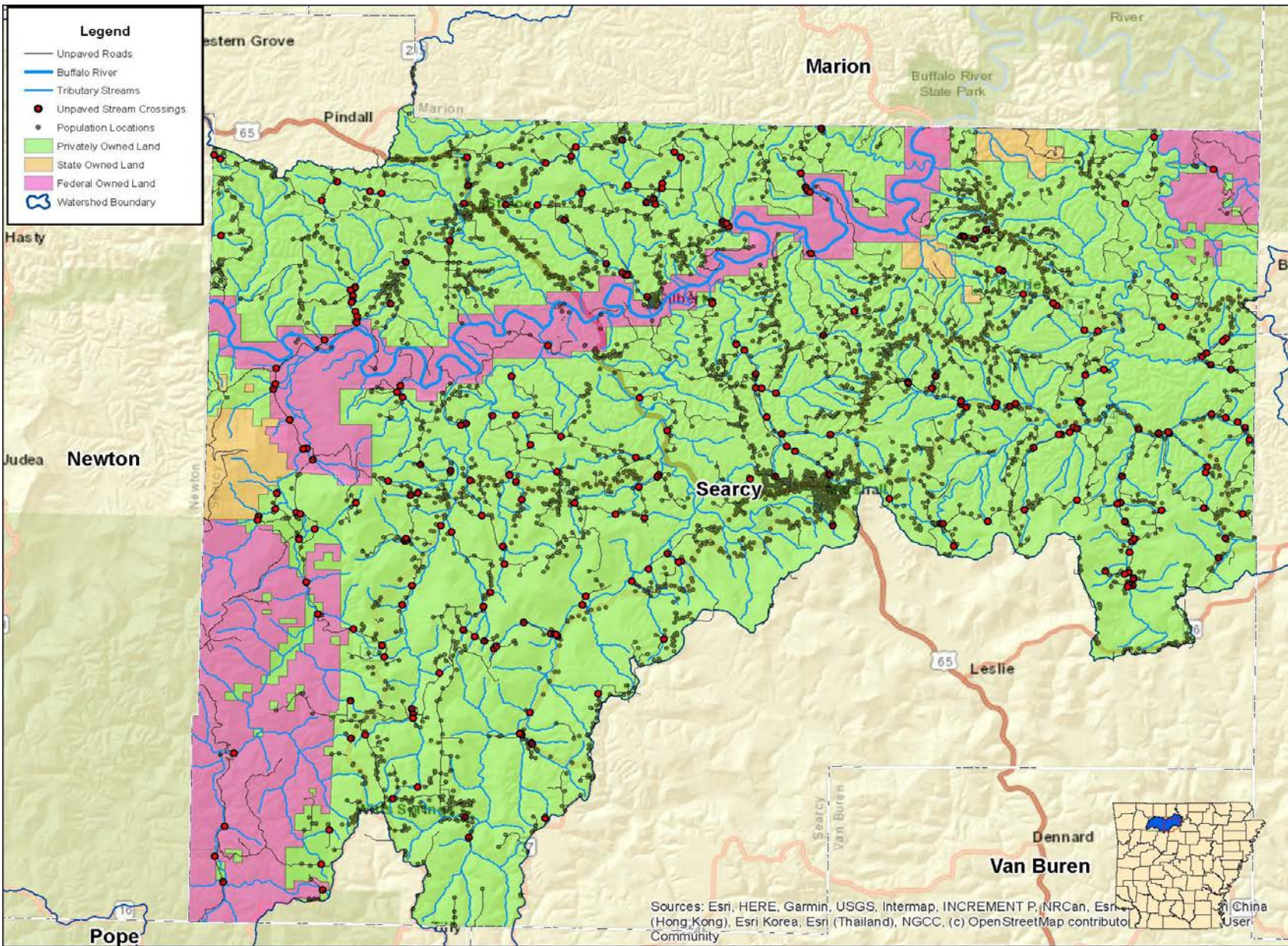
Category	Total
Unpaved Roads (Miles):	885
Tributary Stream (Miles):	852
Unpaved Roads Stream Crossings:	332
Population:	7,772
State Owned Land (Acres):	12,606
Privately Owned Land (Acres):	215,800
Federal Owned Land (Acres):	168,076

Sources: Esri, HERE, Garmin, USGS, Intermap, INCREMENT P, NRCan, Esri Japan, METI, Esri China (Hong-Kong), Esri Korea, Esri (Thailand), NGCC, (c) OpenStreetMap contributors, and the GIS User Community





# County Breakdown of the Watershed - Searcy County



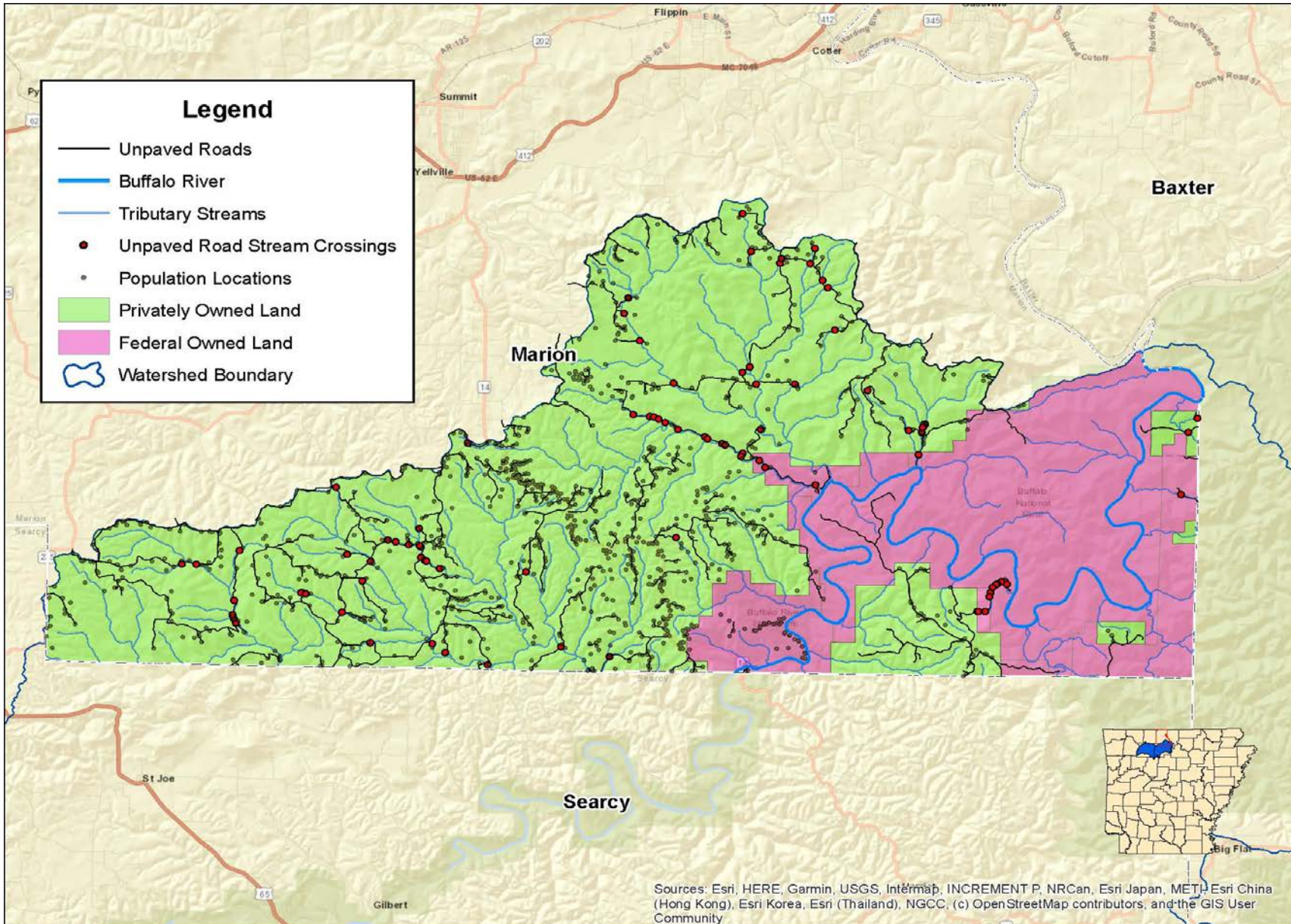
The Table Below is a Breakdown of the Items on the Map

Category	Total
Unpaved Roads (Miles):	834
Tributary Stream (Miles):	707
Unpaved Roads Stream Crossings:	258
Population:	7,666
State Owned Land (Acres):	6,528
Privately Owned Land (Acres):	258,509
Federal Owned Land (Acres):	54,366





# County Breakdown of the Watershed - Marion County



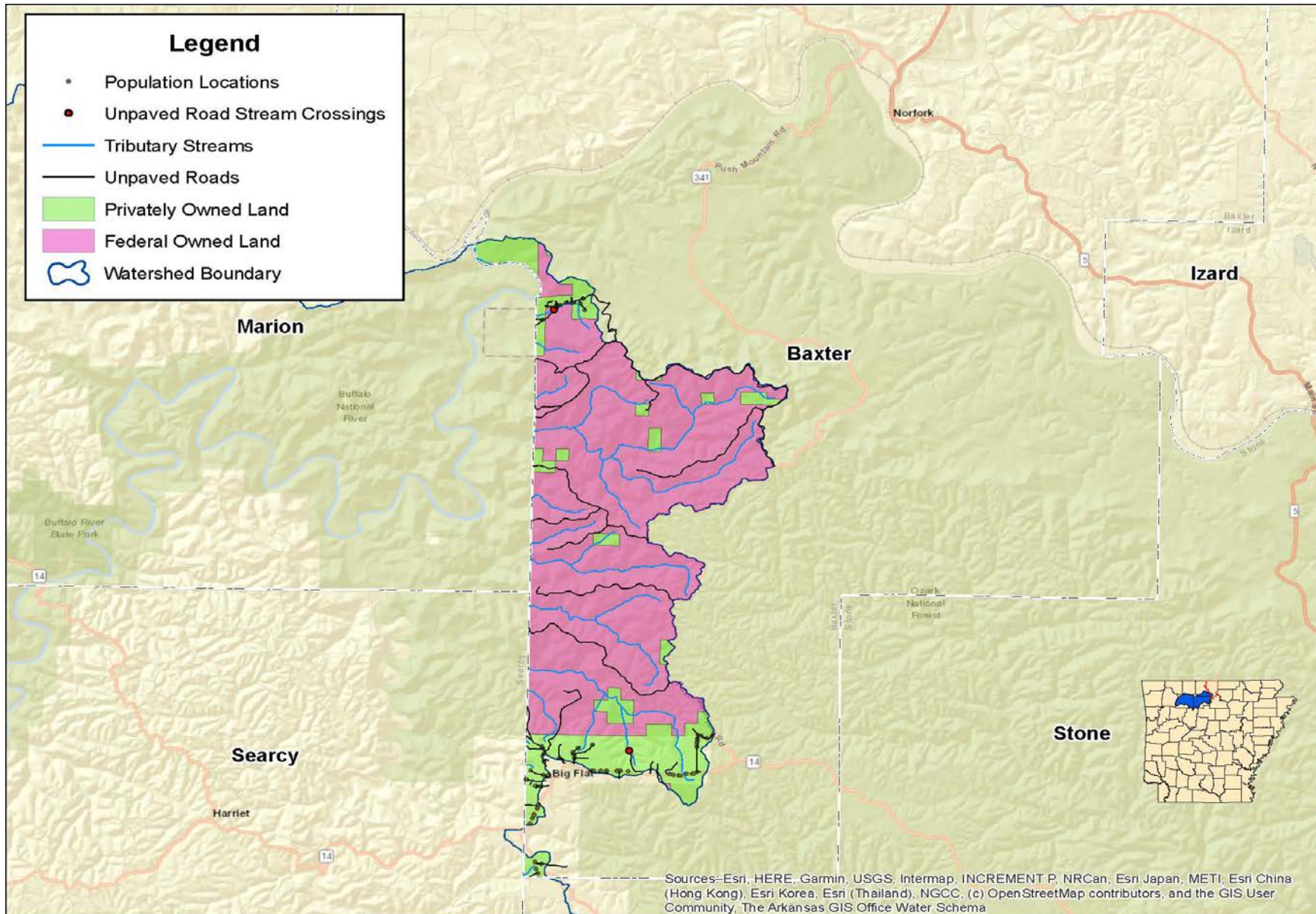
The Table Below is a Breakdown of the Items on the Map

Category	Total
Unpaved Roads (Miles):	203
Tributary Stream (Miles):	221
Unpaved Roads Stream Crossings:	67
Population:	1,832
State Owned Land (Acres):	0
Privately Owned Land (Acres):	67,059
Federal Owned Land (Acres):	28,934





# County Breakdown of the Watershed - Baxter County



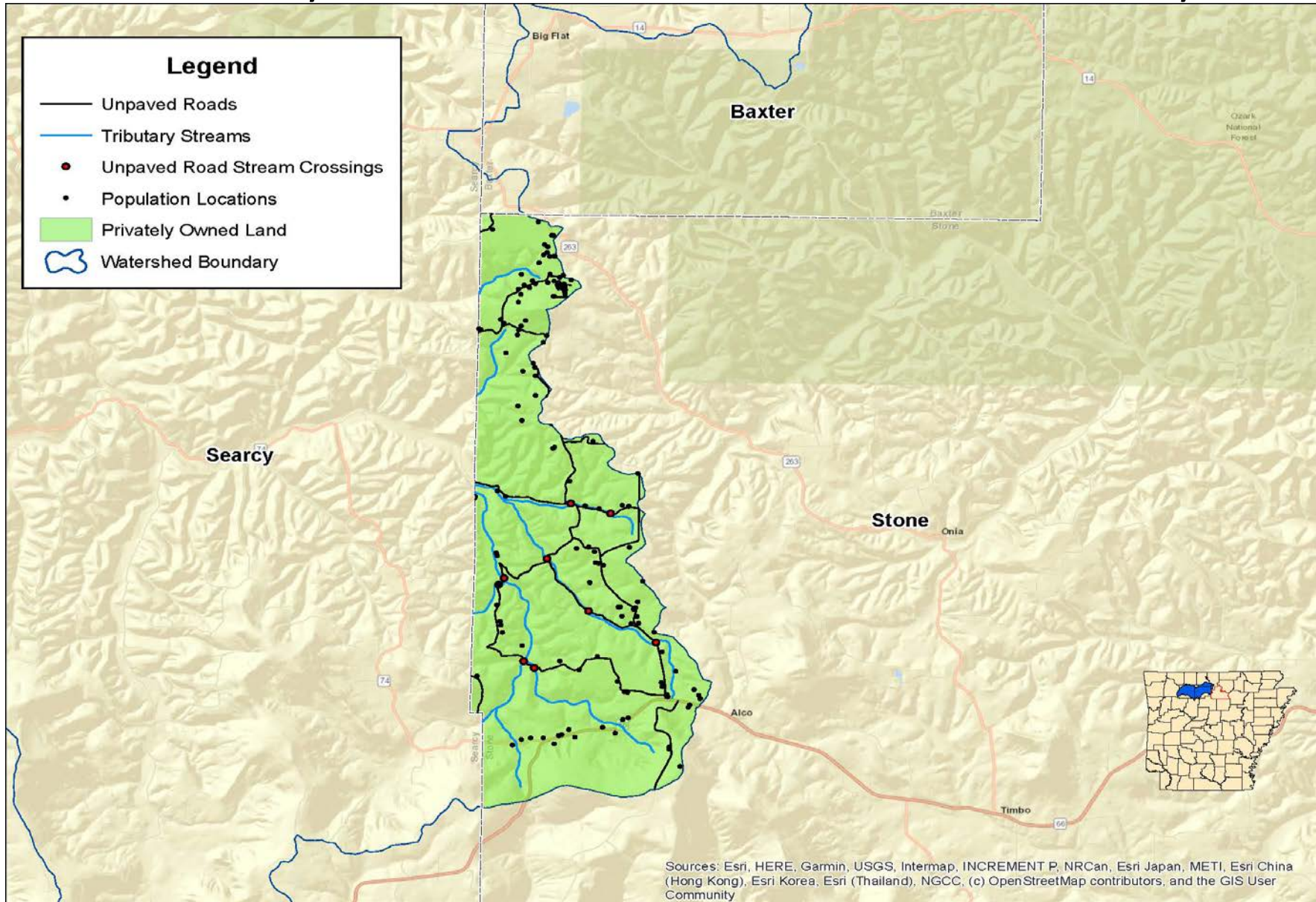
The Table Below is a Breakdown of the Items on the Map

Category	Total
Unpaved Roads (Miles):	46
Tributary Stream (Miles):	39
Unpaved Roads Stream Crossings:	2
Population:	155
State Owned Land (Acres):	0
Privately Owned Land (Acres):	4,051
Federal Owned Land (Acres):	17,021





# County Breakdown of the Watershed - Stone County



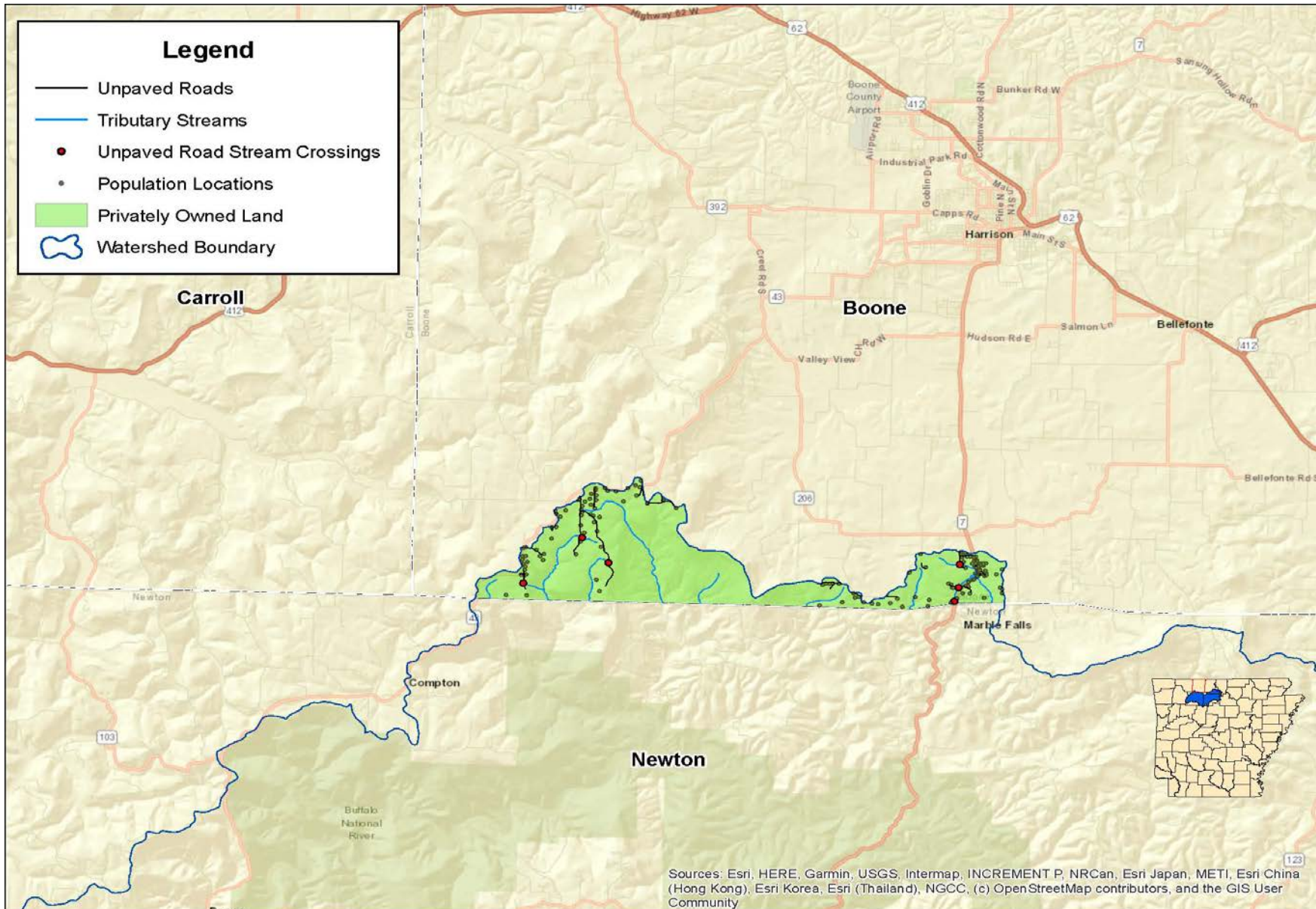
The Table Below is a Breakdown of the Items on the Map

Category	Total
Unpaved Roads (Miles):	20
Tributary Stream (Miles):	14
Unpaved Roads Stream Crossings:	9
Population:	221
State Owned Land (Acres):	0
Privately Owned Land (Acres):	6,799
Federal Owned Land (Acres):	0





# County Breakdown of the Watershed - Boone County



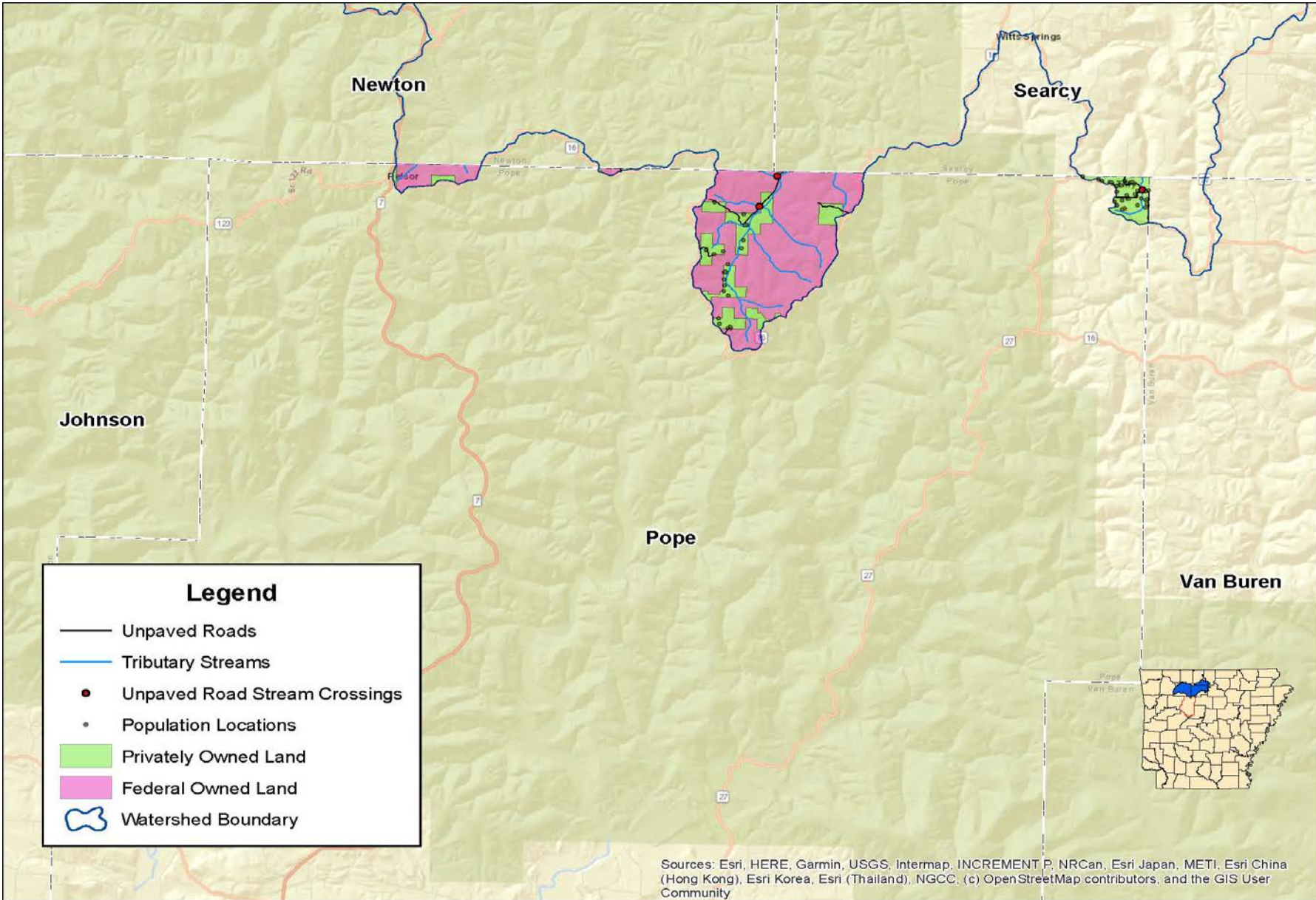
The Table Below is a Breakdown of the Items on the Map

Category	Total
Unpaved Roads (Miles):	11
Tributary Stream (Miles):	13
Unpaved Roads Stream Crossings:	6
Population:	239
State Owned Land (Acres):	0
Privately Owned Land (Acres):	6,559
Federal Owned Land (Acres):	0





# County Breakdown of the Watershed - Pope County



The Table Below is a Breakdown of the Items on the Map

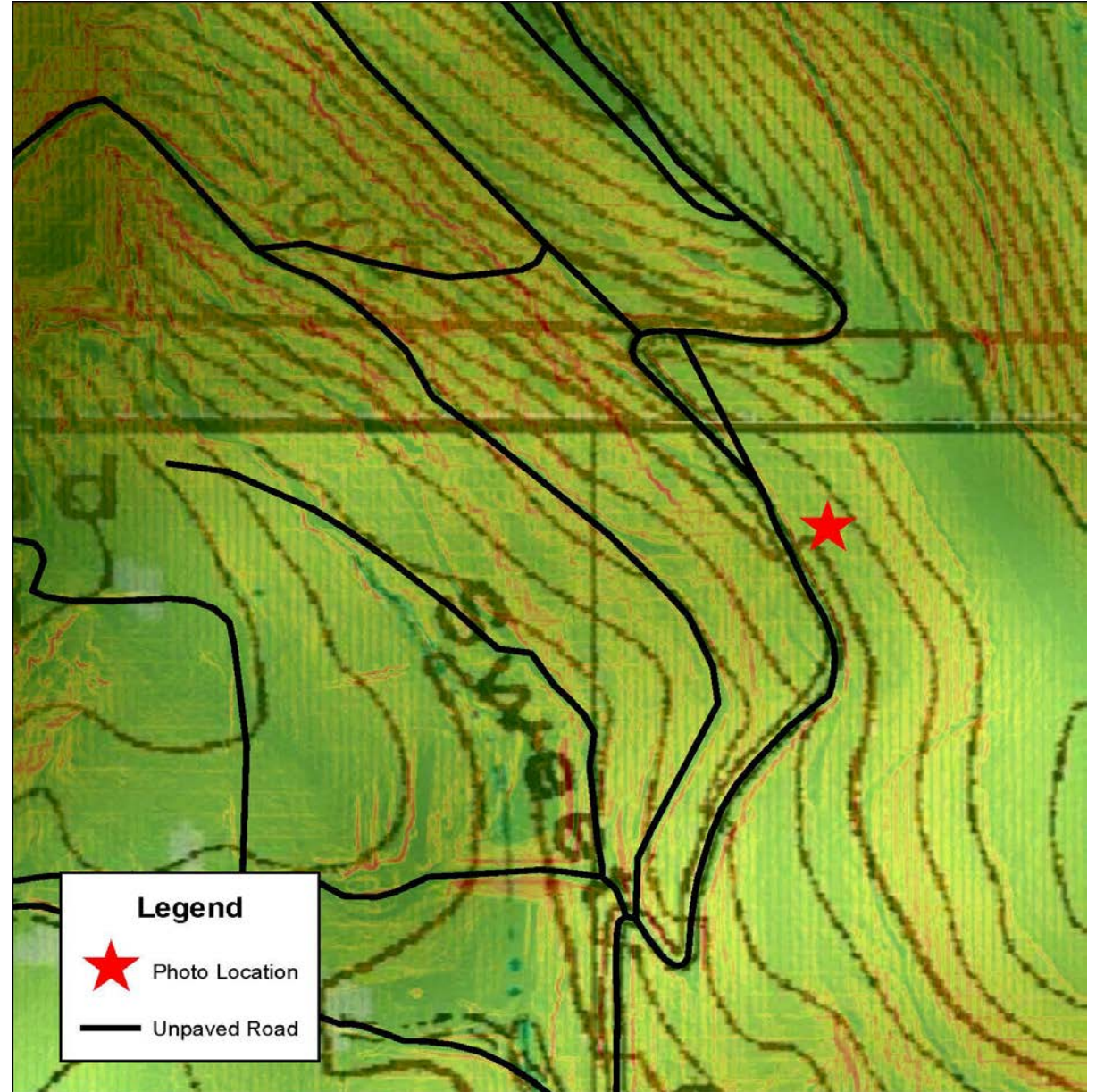
Category	Total
Unpaved Roads (Miles):	7
Tributary Stream (Miles):	15
Unpaved Roads Stream Crossings:	4
Population:	139
State Owned Land (Acres):	0
Privately Owned Land (Acres):	1,786
Federal Owned Land (Acres):	5,866

Sources: Esri, HERE, Garmin, USGS, Intermap, INCREMENT P, NRCan, Esri Japan, METI, Esri China (Hong Kong), Esri Korea, Esri (Thailand), NGCC, (c) OpenStreetMap contributors, and the GIS User Community





# Topography of an Unpaved Road in Northwest Searcy County







Questions?

